



PRESS/Dec -2021
Date. 13. Feb .2022



The Hashemite Kingdom of Jordan

Industrial Production Index Increases by 13.01% In 2021 Compared with 2020

The monthly report issued by the Department of Statistics indicates an increase in the General Industrial Production Index in 2021 to reach 89.85 against 79.50 in 2020 recording an increase by 13.01%. This mainly was a result of an increase in the production index of manufacturing industries by 12.32 percentage points with a relative importance of 86.01%, the production index of the quarrying industries by 0.57 percentage points with a relative importance of 8.22% and the production index of Electricity by 0.12 with a relative importance of 5.76%.

The report also indicates an increase in the general index of industrial production for December 2021 to reach 91.15 against 87.27 for the same period of 2020, to record an increase by 4.45%. This has resulted mainly from the increase in the production index of the manufacturing Industries by 3.34 percentage points with a relative importance of 86.01%, and the production index of the quarrying industries by 0.54 percentage points with a relative importance of 8.22%, and the production index of electricity by 0.57 percentage points with a relative importance of 5.76%.

Comparing the production indices for December 2021, there was an increase in the industrial production index to reach 91.15 against 89.96 for November 2021, recording an increase by 1.32%. This growth has resulted from the increase in the production index quarrying industries by 1.10 percentage points with a relative importance of 8.22% and the production index of electricity by 1.19 percentage points with a relative importance of

5.76%. Meanwhile, there was a decrease in the production index of the manufacturing Industries by 0.97 percentage points with a relative importance of 86.01%.

The following figure shows the trend of the production Index Number for the months of 2020 and 2021.

Figure 1: The IPI Index Number by months for 2020 and 2021

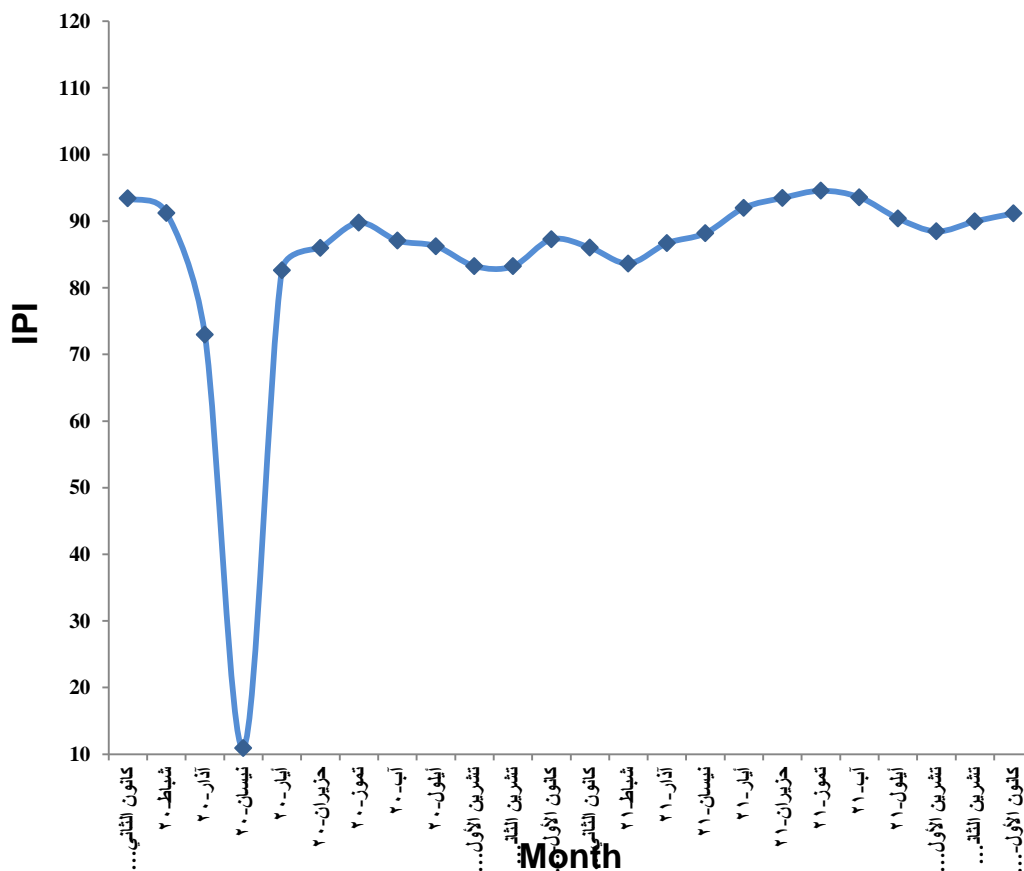


Figure 2: The IPI for main Industries for the years 2010- 2021

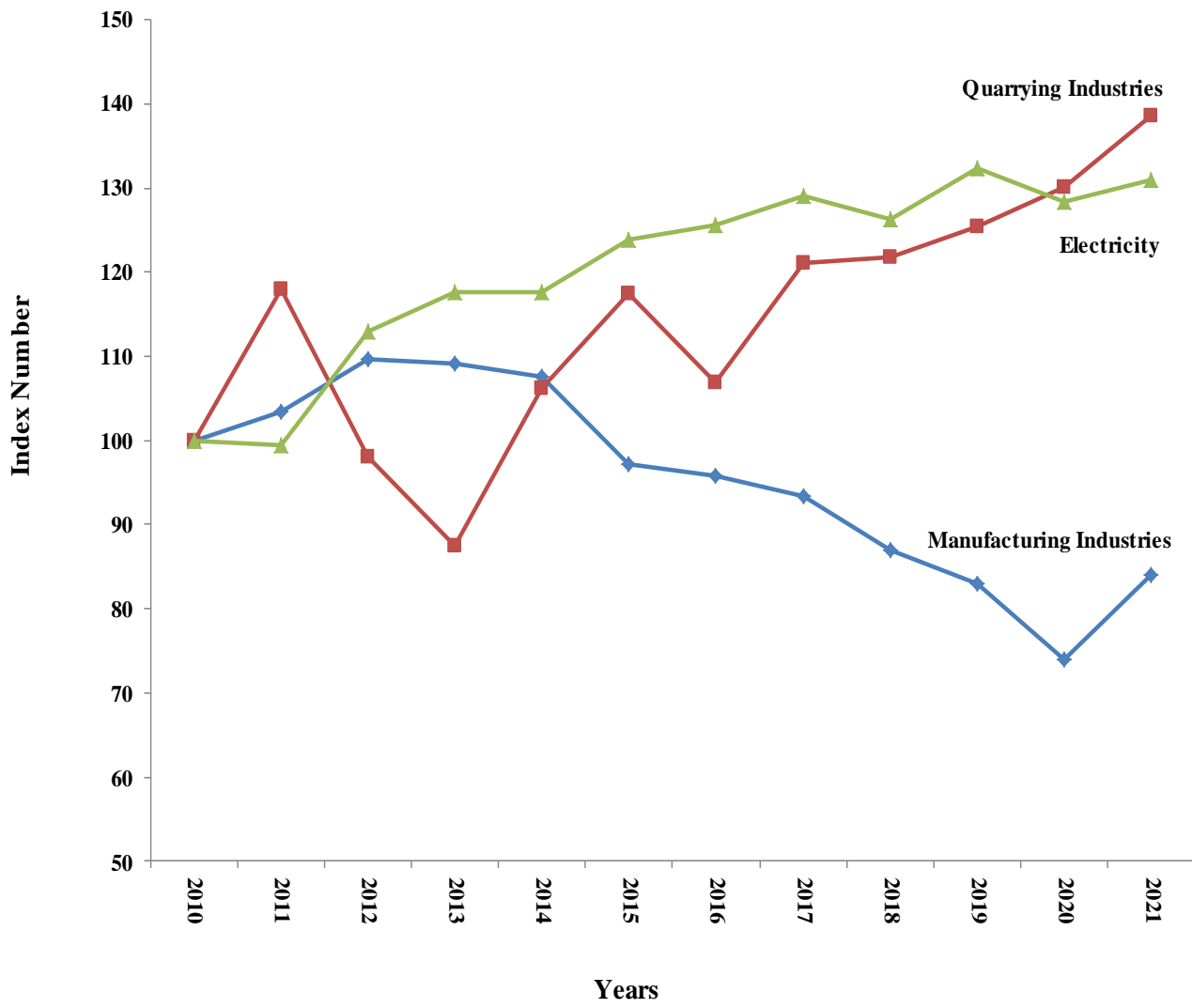


Table 1: The average monthly and accumulative change of Industrial Production Quantities during 2020 and 2021

Month	JAN	FEB	MAR	APR	MAY	JUN	JUL	AUG	SEP	OCT	NOV	DEC
Year												
Monthly 2020	2.4-	10.6-	1.3	3.0	1.2	0.4	5.9	0.6	0.6-	1.8	4.2-	0.1-
Monthly 2021	1.0-	2.77-	3.62	1.75	4.30	1.61	1.16	1.04-	- 3.38	2.17-	1.70	1.32
Accumulative 2021	3.2-	8.12-	0.49-	28.29	24.31	21.2 4	18.5 3	16.96	15.4 7	14.4 9	13.87	13.01